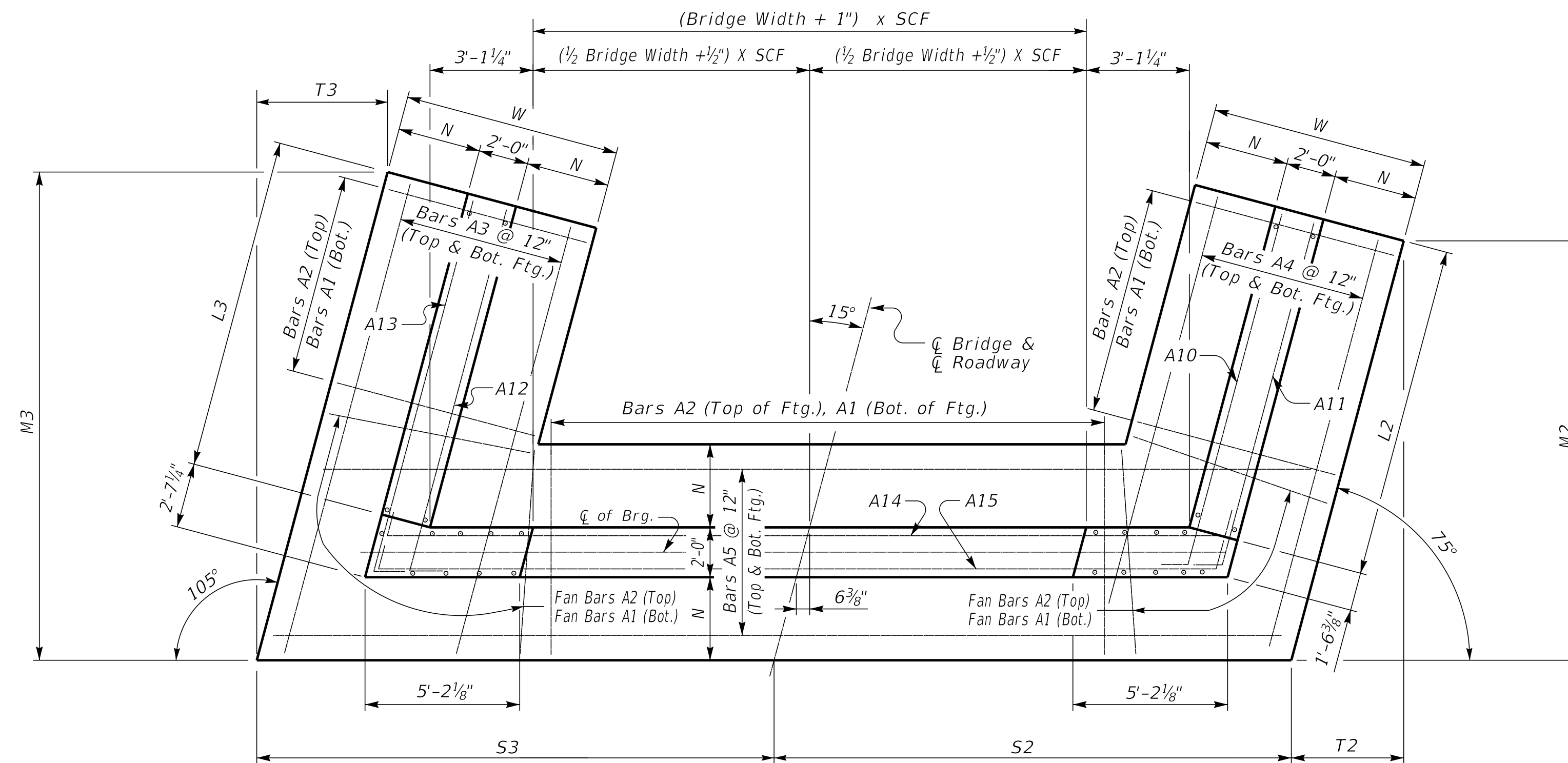


# 15° SKEW VARIABLE BRIDGE WIDTH 2:1 FILL SLOPES WINGS PARALLEL TO ROADWAY

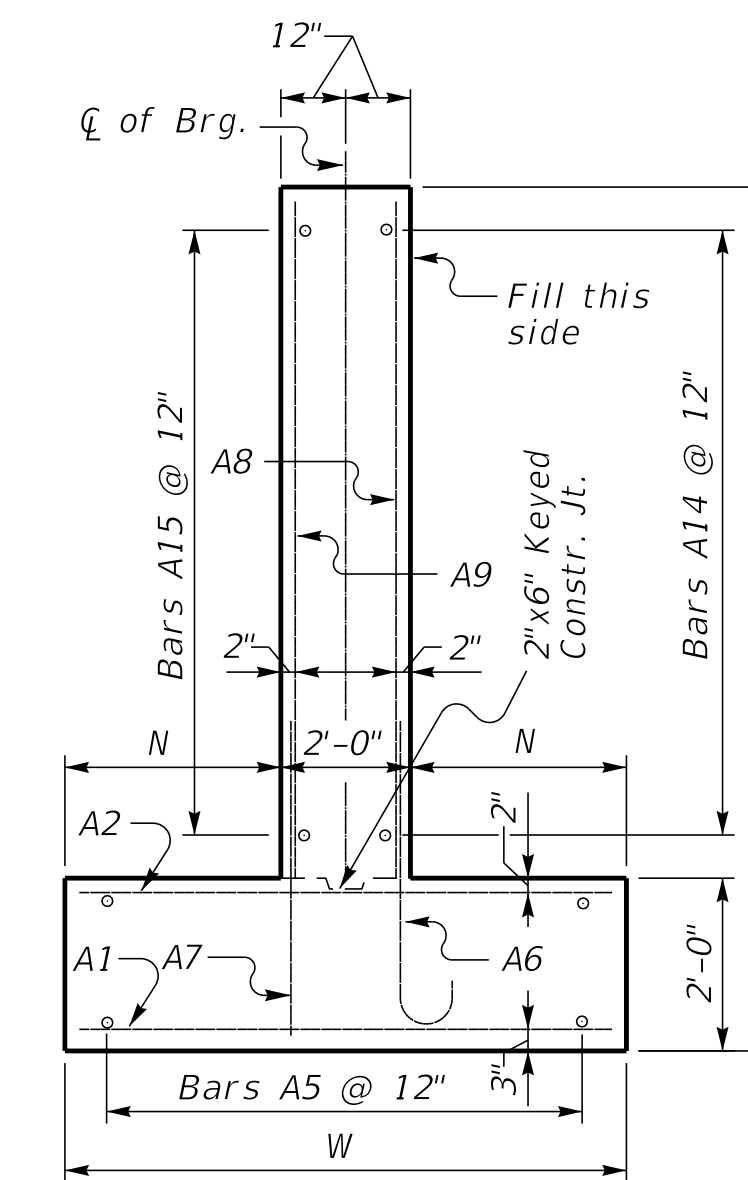
ABUTMENT SKEW CORRECTION FACTOR (SCF) = 1.035



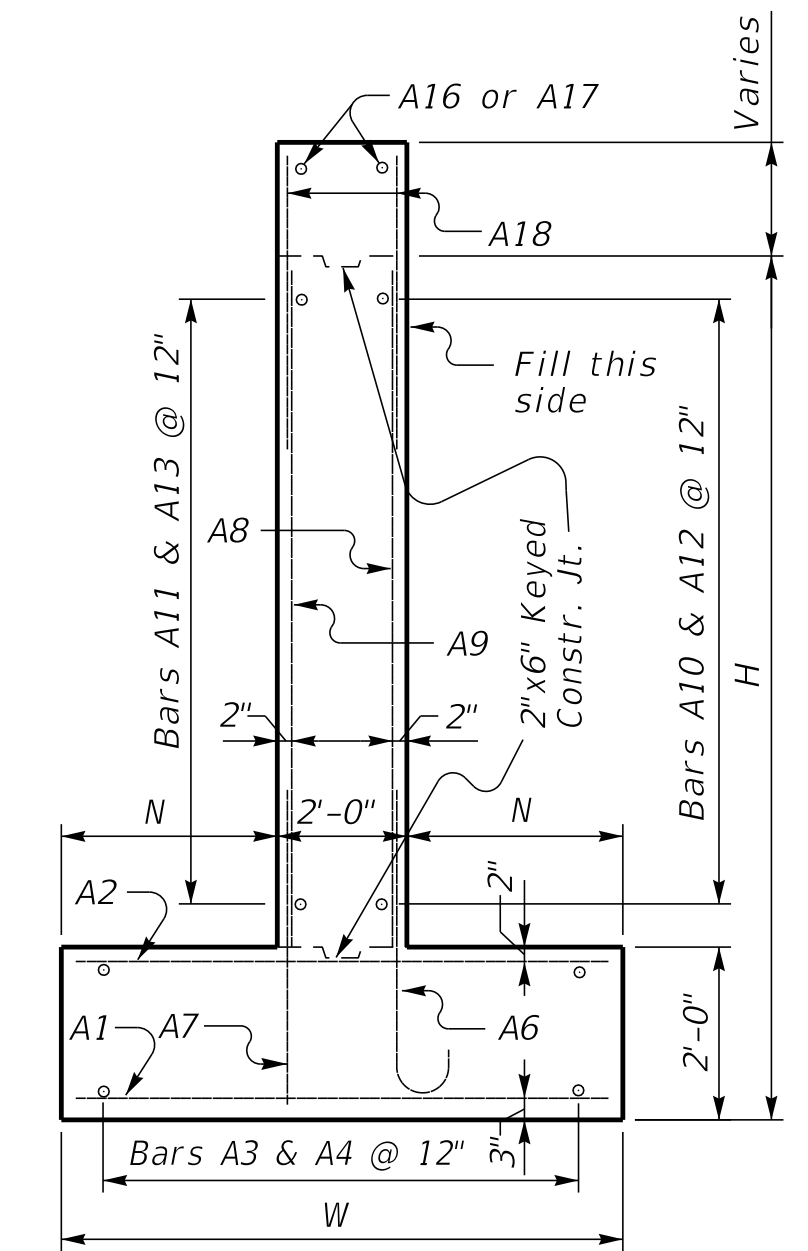
(Left Skew as shown; right skew opp. hand)

**PLAN**

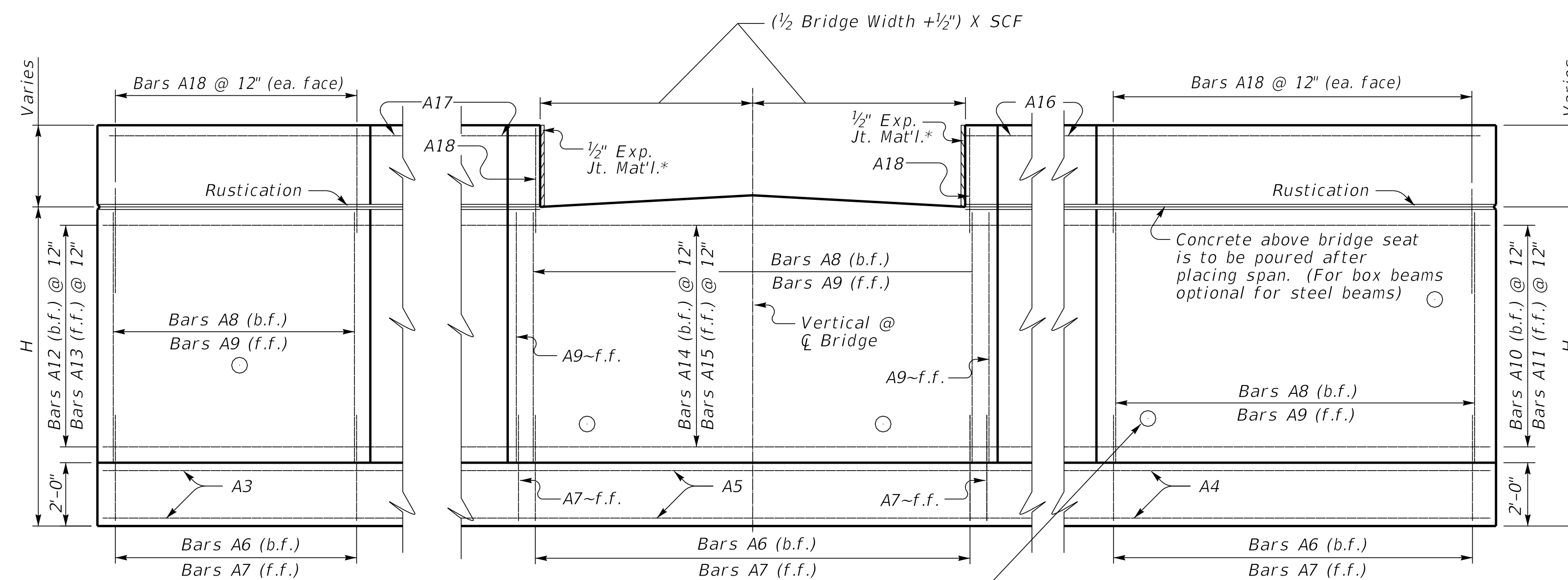
NOTE: Trim A16 & A17 bars if necessary  
Trim A3 bars as necessary



**WALL SECTION**

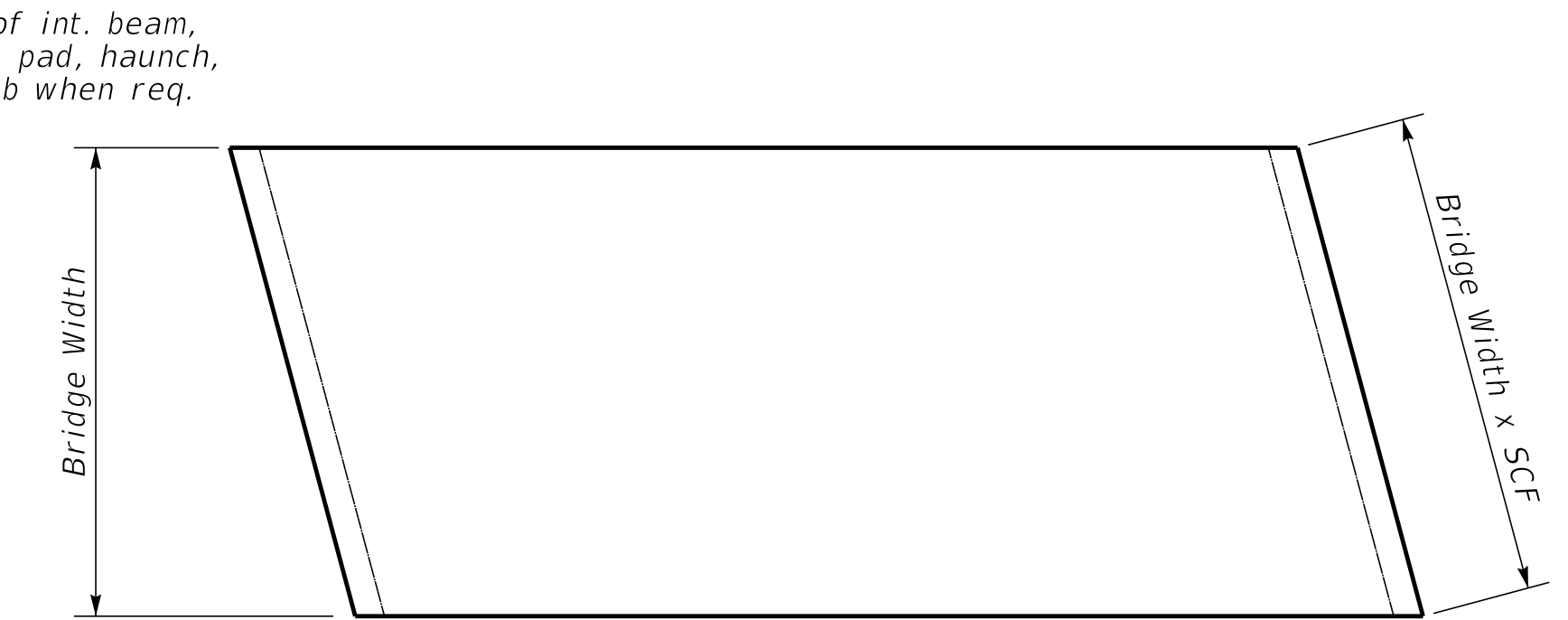


**WING SECTION**

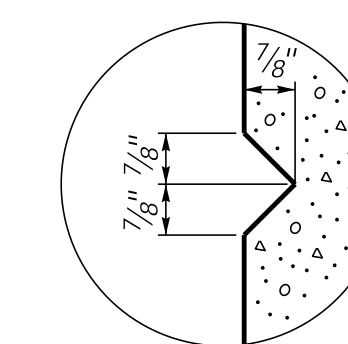


**ELEVATION**

\*Expansion Joint Material:  
AASHTO M153  
Type-I Sponge Rubber



**PLAN OF SUPERSTRUCTURE SLAB**



**RUSTICATION  
GROOVE**

Place 4\" weep hole drains at 8'-0\" centers at such elevation as to afford best drainage of backfill, in accordance with the Standard Specifications.

SUBMITTED *Michael Cost* 10/25/2024  
DIVISION DIRECTOR DATE